

Type G32 Quickflex

The Seetru Quickflex gauge is a flat glass level gauge which offer enhanced column protection over and above a tubular glass gauge. Please note – the Quickflex gauge is not type approved for use with flammable liquids for shipbuilding applications, if you require gauge with marine type approvals please see the G31 Seeflex gauge and the G35 Seemag gauge.

Example Applications

- Diesel/fuel oil (on land only – if for shipbuilding see G31 Seeflex gauge and the G35 Seemag gauge)
- Chemicals
- Water
- Coolant

Specifications

- Maximum Operating Pressure: 3.25 bar
- Maximum Operating Temperature: 100°C
- Minimum Centre Distance – Closed Circuit Design: 358mm
- Minimum Centre Distance – Open Circuit Design: 315mm

Approvals

The Quickflex gauge is not type approved for use with flammable liquids for shipbuilding applications, if you require gauge with marine type approvals such as LR, DNV, BV, ABS etc, please see the G31 Seeflex gauge and the G35 Seemag gauge.

Materials of Construction

Component	Material
Front Bezel	Black Coated, Rust Protected Mild Steel
	Stainless Steel 304
Back Channel	Stainless Steel 304
Valve Bodies / End Units	Brass
	Stainless Steel 316
Reflex Glass	Hardened Borosilicate



Seal Materials

Seal Material	Temperature Range
Nitrile (NBR)	-35°C to +100°C
Viton (FKM)	-15°C to +100°C

Other seal materials available upon request.

Connection Options

Type	Size
Threaded Connections	1/2" BSP or NPT
	3/4" BSP or NPT
Flanged Connections	DIN Flanges
	ANSI Flanges
Weld Boss	42mm OD

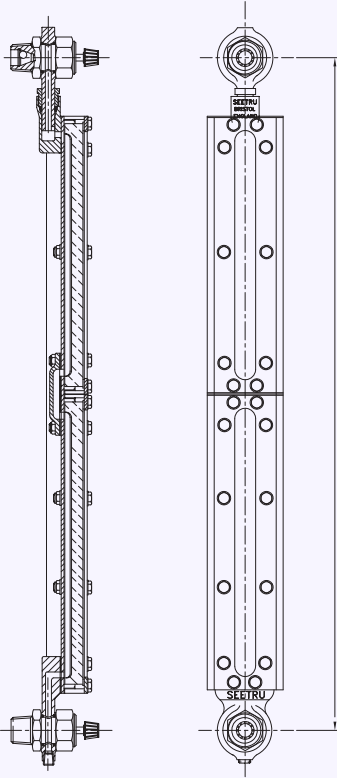
Other connections available upon request.

Design:

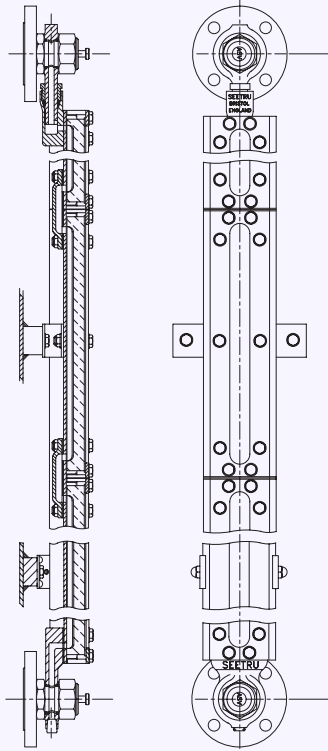


Gauge always supplied with manual screw down isolation valve at the bottom connection, the 3/4" valve is available with auto shut-off valve to seal the tank in case of damage to the gauge column.

With Threaded Connections

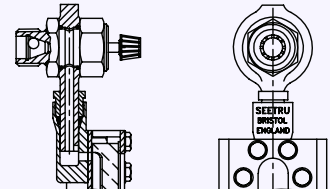


With Flanged Connections

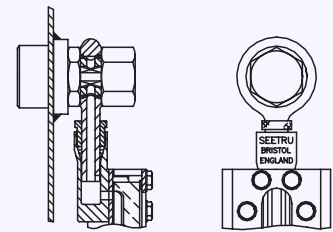


Closed Circuit Design Top Fittings

Manual screw down isolation valve
(3/4" version available with auto shut-off)



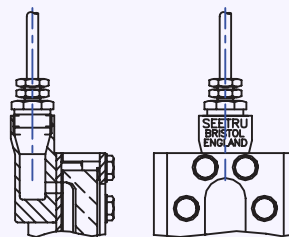
Valveless tank return



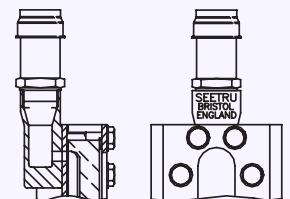
Open Circuit Design Top Fittings

(TOP OF GAUGE MUST BE MIN. 100mm ABOVE TANK TOP)

Pipe Union Connection



Automatic Safety Vent Valve



Closed circuit design.

The closed circuit design penetrates the tank wall at both top and bottom connections. The options for the top connection are either a manual screw down isolation valve or valve less tank return. The 3/4" screw down valve is available with auto shut-off.

Open circuit design

This is only allowable when it is possible for the gauge column to extend above the top of the tank by at least 100 mm. The upper end of the gauge can be supplied with an automatic safety vent valves or, alternatively, a pipe union connection. The automatic safety vent will allow air to pass, but will seal against a liquid level. In the case of the pipe union connection design, a 10 mm o/d steel vent pipe is returned to the tanks or into the tank vent pipe.

Graduation

Where a measure of the precise storage volume is required, an engraved scale plate can be provided marked with the capacity units.