

# Seetru *Liquid Level Gauges*

*For Shipbuilding, Marine and Offshore Applications*



## SHIPBUILDING & OFFSHORE

**SEETRU**



[www.seetru.com](http://www.seetru.com)

*Edition 5* 6.8.2025



## *Bristol-based Manufacturers of Safety Relief Valves and Liquid Level Gauges*



Seetru Limited was founded in 1949 with the aim of producing the finest liquid level gauges so customers could “see the true” level even under the most severe conditions. This philosophy of making the finest through innovation continued with the introduction of the Seetru range of pressure relief devices, circa 1950 the Seetru Tutchtite-sealing system revolutionized the safety valve market with valves that do not leak even after repeated popping even at high pressures.

Today, Seetru have an extensive range of Pressure Relief Valves and Liquid Level Gauges which carry a wide range of international approvals and are supplied worldwide.

### **Our Products**

Seetru are Bristol-based manufacturers of safety relief valves and other special purpose ancillary valves for a wide range of compressed air, industrial gas, refrigerants, powder, steam, liquid and liquefied gas applications. These valves meet important international standards which include: ISO-4126-1 & -7 and ASME BPVC VIII.1 & XIII design codes as well as type test approvals from TÜV and the National Board. These products comply with the requirements of the European Pressure Equipment Directive (PED) and are available with both the CE mark as well as the UK stamp, and have wide international approvals. Seetru products are fully compliant with the requirements of the UK Pressure Equipment (Safety) Regulations and come with the UKCA mark.



Seetru also have a wide range of special purpose valves. The range includes Change-Over Valves (designed for switching parallel safety valves without interrupting operation), Minimum Pressure Check Valves (typically suitable for application on compressors), Air-Start Valves (designed to handle a two-stage operation for air starting of engines). We also manufacture a range of Air Receiver & In-line Check Valves.

Seetru liquid level gauges are primarily of two types, sight gauges and magnetic float by-pass gauges. Many of the gauges are direct reading though most have optional electronic remote reading systems and computer interfaces. The range includes the Quickmount, Seemag and CPI gauges for industrial and chemical applications, and the Seeflex and Seemag for marine applications. The Company’s substantial design and development department, which includes TÜV approved testing facilities, enable us to provide extensive bespoke design, advisory and manufacturing services to develop or adapt individual products for new applications.

# LIQUID LEVEL GAUGES SHIPBUILDING & OFFSHORE



Seetru liquid level gauges are widely used in the shipbuilding and offshore industries

They are highly accurate, reliable, and durable, making them ideal for use in harsh and demanding environments. Seetru gauges are also available in a wide range of sizes and configurations to meet the specific needs of each application.

One of the most popular Seetru gauges for the shipbuilding and offshore industries is the G21 Tubular Marine Gauge. This gauge is designed for use with non-flammable liquids, such as water and coolant. It is commonly used for water storage and coolant tanks on board cargo ships, tugs, and military vessels.

For flammable liquid applications, Seetru offers the G35 Seemag and G31 Seeflex gauges. These gauges are type approved by many worldwide shipping authorities, including Det Norske Veritas (DNV), RINA, Lloyds Register of Shipping, Nippon Kaiji Kyokai, and Bureau Veritas. They are commonly used for fuel oil, hydraulic oil, and lubrication oil tanks of cargo ships and work boats.

## Table of contents

TYPE	PRODUCT / DESIGN	MATERIALS	CONNECTION OPTIONS	PAGE
G20 Admiralty	Tubular glass gauge	Brass or Stainless steel	Weld bosses	<a href="#">8-10</a>
G21 Tubular Marine	Tubular glass gauge	Brass or Stainless steel	Weld bosses, threaded or flanged	<a href="#">11-12</a>
G22 Quickmount	Tubular glass gauge	Brass, Stainless steel or Polypropylene	Threaded, flanged or weld bosses	<a href="#">13-15</a>
G31 Seeflex	Flat glass gauge	Brass or Stainless steel	Weld bosses, threaded or flanged	<a href="#">16-18</a>
G32 Quickflex	Flat glass gauge	Brass or Stainless steel	Threaded, flanged or weld bosses	<a href="#">19-20</a>
G35 Seemag	Magnetic by-pass gauge	Stainless steel	Threaded, flanged or stub pipe for welding	<a href="#">21-24</a>



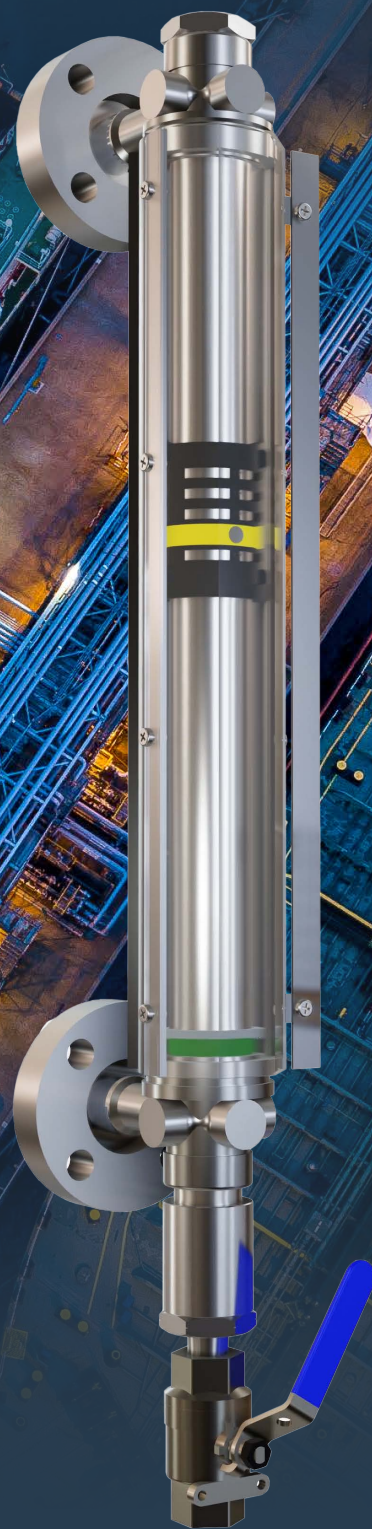
# Seetru Liquid Level Gauges

## Your Maritime Partner



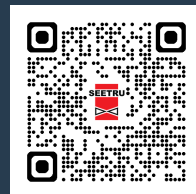
### Setting the Standard for Accuracy and Reliability

Highly accurate, reliable, and durable - Seetru gauges are ideal for use in harsh and demanding environments. Seetru level gauges are also available in a wide range of sizes and configurations to meet the specific needs of each application.



[www.seetru.com/shipbuilding-and-offshore](http://www.seetru.com/shipbuilding-and-offshore)

[www.seetru.com](http://www.seetru.com) | [info@seetru.com](mailto:info@seetru.com) | +44 (0) 117 930 6100





# Shipbuilding, Marine & Offshore

## We've got you covered!



### Safety First

Seetru prioritises safety in every aspect of our products. Our marine level gauges comply with the strictest international safety regulations, including SOLAS (Safety Of Life At Sea). This ensures peace of mind for crews and regulatory bodies alike.



### Superior Reliability

Seetru gauges are built to last. We utilise robust materials, precision engineering, and rigorous quality control processes to guarantee long-lasting performance and minimise maintenance requirements.



### Enhanced Visibility

Seetru level gauges provide clear and easy-to-read level indication, with 180 degrees of visibility.



### Diverse Applications

Seetru offers a wide range of marine level gauges suitable for various tanks and applications, from fuel storage to ballast water management. Our customisable options allow us to tailor solutions to your specific needs.

[www.seetru.com/shipbuilding-and-offshore](http://www.seetru.com/shipbuilding-and-offshore)





# Find Seetru Gauges Worldwide Trusted Global Supplier



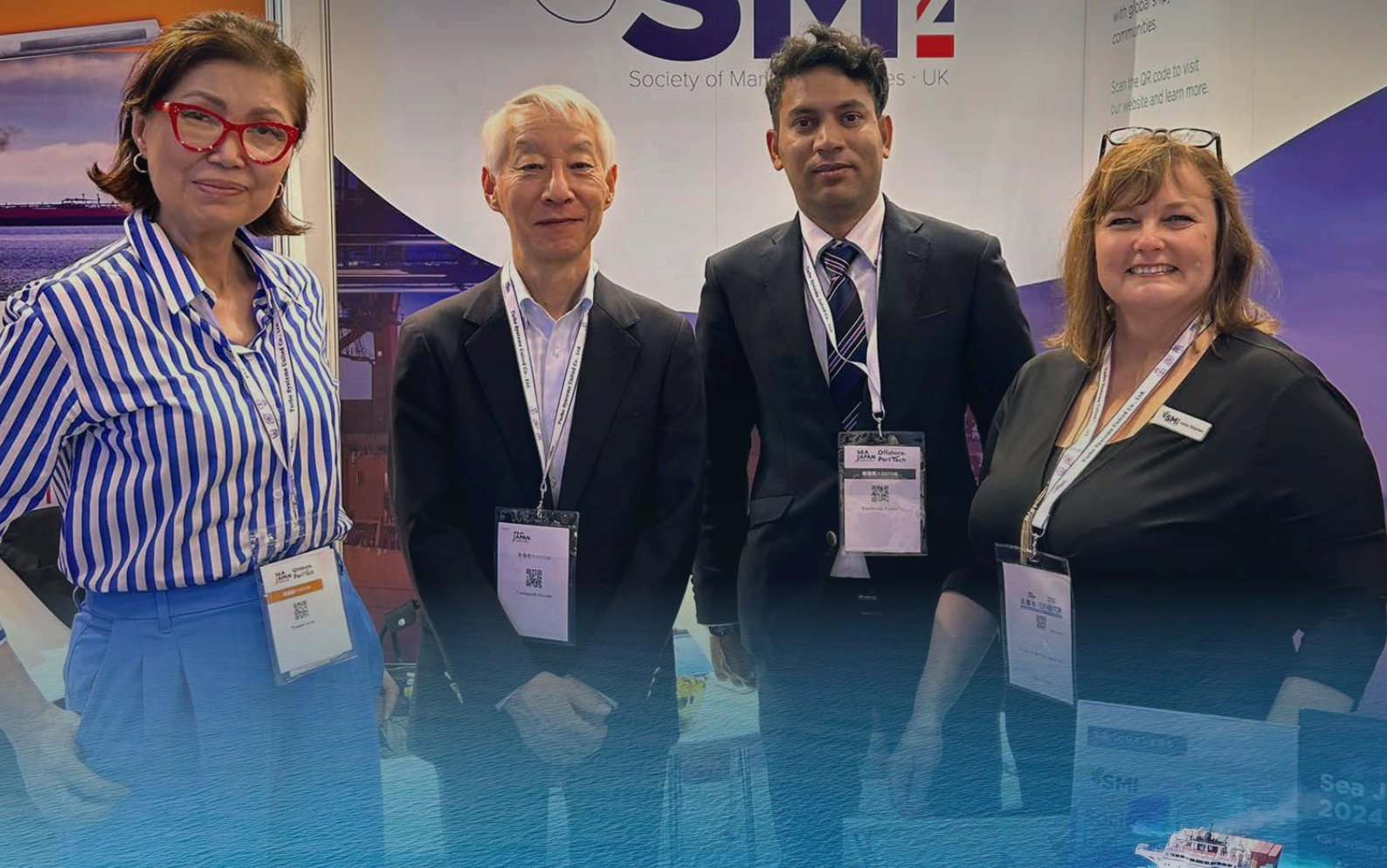
MARINE

**Protea**  
technology leadership  
in measurement solutions



The Society of Maritime Industries (SMI) is the voice of the UK's Maritime Engineering Sector.  
Supporting our wide-ranging supply-chain members through our active engagement with global shipyards and ship owning communities.

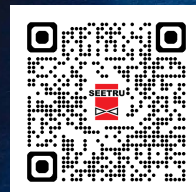
Scan the QR code to visit our website and learn more.



## Why Choose Seetru for your Maritime Journey?

We understand the unique challenges and demands faced at sea. From navigating rough waters to ensuring the safe and efficient operation of your vessel, Seetru gauges provide the reliable performance and accuracy you need.

# Seetru Liquid Level Gauges





# UK Manufacturing Trust In Seetru



## More Than Just Products

When you choose Seetru, you're not just getting a valve or a gauge, you're getting peace of mind. You're partnering with a team of passionate engineers and dedicated professionals who are driven by a single mission: to deliver the highest quality products, with the fastest turnaround times, at competitive prices. So, whether you're a seasoned engineer or a first-time buyer, rest assured that Seetru has the solution you need, supplied and supported by a company that cares.



## Seetru Liquid Level Gauges





## G20 Admiralty Gauge

The Seetru Admiralty liquid level gauge is a direct reading, tubular design for marine & shipbuilding use. This gauge was designed and developed to meet arduous UK Ministry of Defence requirements, such as for tank deflection and underwater shock loads.

### Example Applications

- Diesel
- Fuel oil
- Lubrication oil
- Water
- Coolant

### Specifications

- Maximum working pressure for Glass Sight Tube: up to 22 bar & 15°C @ 400mm centres
- Maximum working pressure for Polycarbonate Sight Tube: up to 14 bar & 100°C.
- Maximum Operating Temperature: 150°C (depending on O-ring material)
- Maximum Centre Distance: (To suit requirements).
- Minimum Centre Distance: 150mm (For gauges longer than 1000mm, the column is split into sections using intermediate support). Each sections maximum length is 1000mm.



### Materials of Construction

Component	Material
Valve Units and Flanges and Flanges	Brass
	Stainless Steel
Guard Tube	Aluminium
	Stainless Steel
	Zinc Plated Mild Steel
Sight Tube	Borosilicate Heat Resisting Glass
	Polycarbonate Plastic
Weld Bosses	Mild Steel
	Stainless Steel

### Seal Materials

Seal Material	Temperature Range
Nitrile (NBR)	Up to 120°C
Viton (FKM)	Up to 150°C
EPDM	Up to 150°C
Neoprene	Up to 140°C

Other seal materials available upon request.

### Connection Options

Type	Size
Weld Boss	42mm



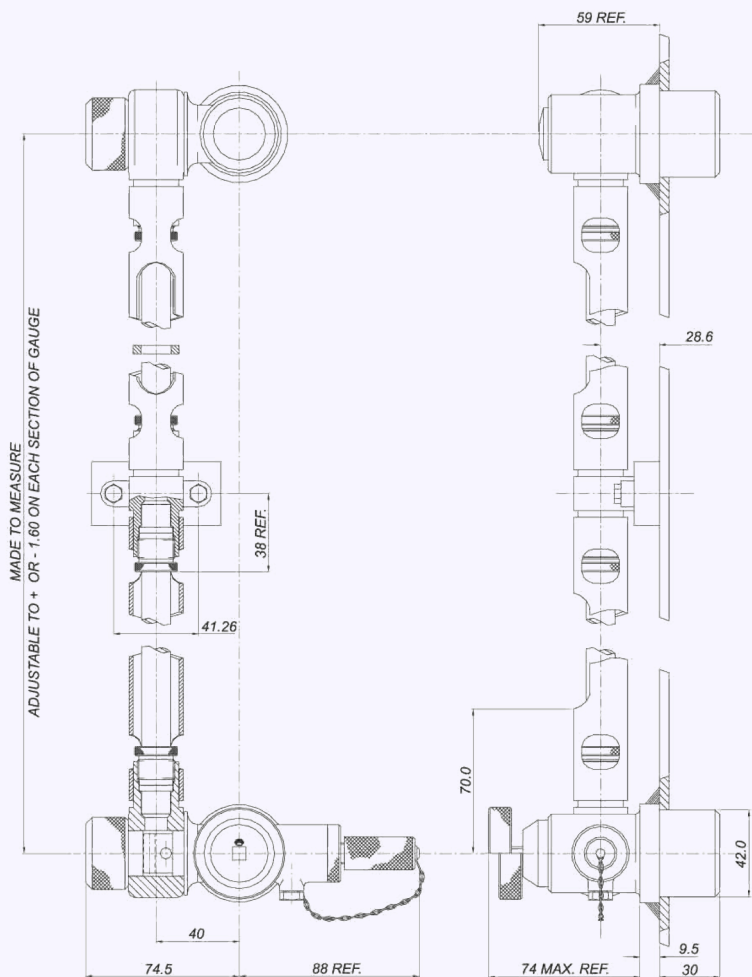
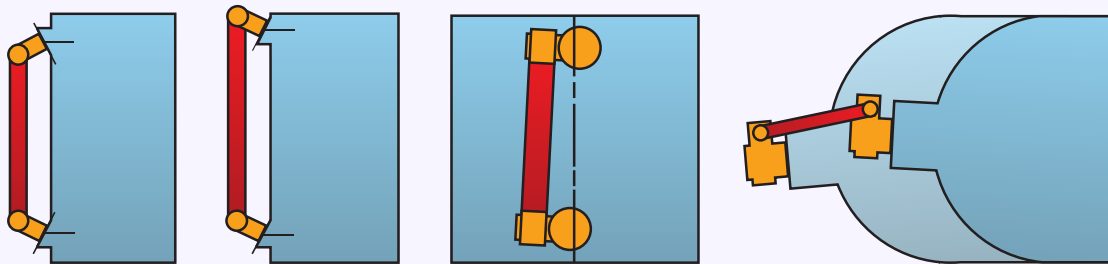
## Design:

This unique gauge allows installation on misaligned tank connections as may, for example, be found on marine or other storage tanks of light walled construction which can deform or bulge. The tank connection valve fittings can accommodate misalignment vertically and along two mutually perpendicular axes horizontally through an adjustable fitting which enables correction of misalignment at the time of fitting or subsequently\*. The valve fittings each form, in fact, a universal joint which gives the gauge its adaptability for difficult conditions of installation.

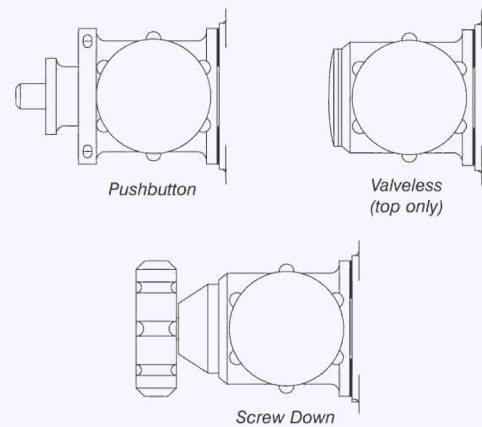
In the push-button version, the self closing valve is situated in the rear portion of the valve body which projects into the tank. This ensures leak-proof protection whatever damage occurs to the gauge parts on the outside of the tank.

This robust direct reading sight tube gauge has substantial passages and is suitable for use on any storage tanks or bunkers for up to medium heavy fuel oil.

### Typical Misalignments accommodated

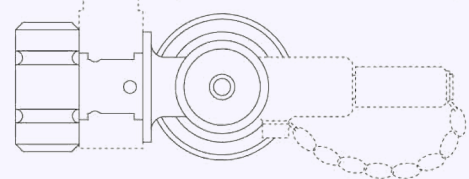


### Connection Options (Top and Bottom)



Contact Seetru for detailed advice on selection of gauge and configuration options to meet application requirements

### Optional Sampler Unit (Available for bottom connection)



\*The Admiralty gauges can only accommodate misalignments which occur subsequent to installation if no intermediate supports are fitted.



### Push-button operation

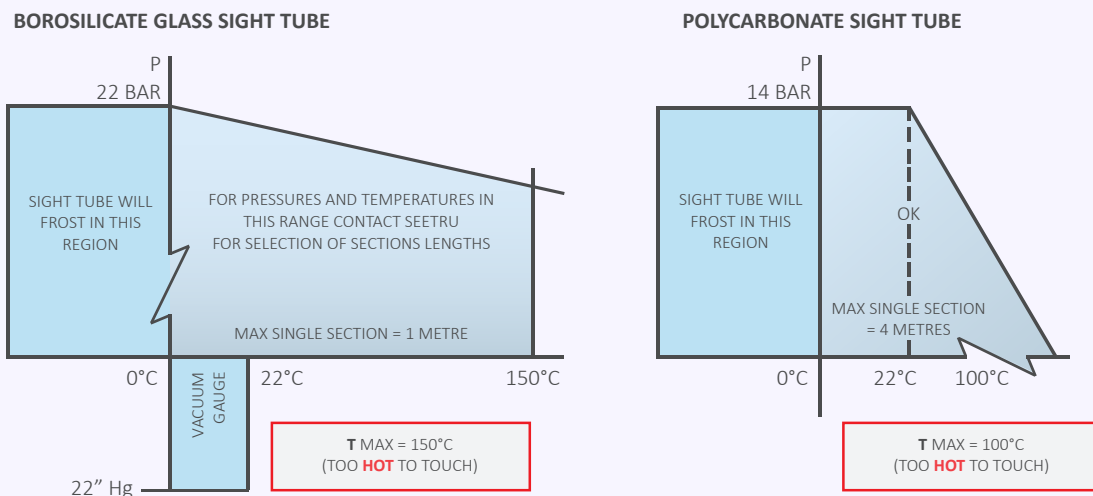
Except when a reading is being taken, the gauge is permanently isolated from the contents of the tank. To take a reading the spring-loaded valve is opened by pressing a push-button; when released, the connection between the tank and gauge is automatically resealed.

### Safe from external damage

Due to the design of the push-button isolation valve, no amount of damage to the gauge or external fittings on the tanks can break the liquid seals. In such an event the fluids cannot escape.

### Graduation

Where a measure of the precise storage volume is required, an engraved scale plate can be provided marked with the capacity units.



The above constraints are approved for water and other non-aggressive liquids only.  
 For any liquid or for any constraint in excess of those given above, please consult Seetru.

### Suggestions for fitting the Admiralty Gauge

The Seetru Admiralty gauge is supplied complete with tank bosses either for welding in position or for fitting by means of special sealing nuts without welding. Where the welded pattern bosses are used it is suggested that the gauge, complete with the bosses, be offered to the holes in the tank wall. The bosses can then be tack-welded to ensure correct positioning.

The gauge and mounting fittings can then be removed and the inside of the bosses protected with graphite grease to prevent oxidation during final welding. After welding the grease should be removed, and the fittings and gauge can then be re-assembled to the tank. Where the alternative non-weld pattern bosses are supplied, these can be positioned and tightened without removing the gauge. If, after fitting the tank bosses, a length adjustment of the gauge is still required, this can be achieved by slackening the sight tube gland nuts and re-tightening after the gauge collars have been correctly aligned.

The intermediate support brackets shown in the diagram are supplied typically for gauges longer than 1 m when fitted with Borosilicate glass sight tubes. The intermediate support brackets may not be necessary when Polycarbonate sight tubes are fitted (contact Seetru for further information).

When fitted with support brackets the gauge is supplied in sections, marked for easy assembly. In this way Seetru gauges are also safeguarded against damage in transit.



## Type G21 Tubular Marine

The Seetru Marine gauge is designed for use within the marine and offshore industries. Due to its tubular design this gauge is suitable only for use with non-flammable liquids. For flammable liquid applications please see either G35 Seemag or G31 Seeflex.

This gauge is commonly used for the water storage and coolant tanks on board cargo ships, tugs and military vessels.

### Example Applications

- Diesel (on land applications)
- Fuel oil (on land applications)
- Water
- Coolants

### Specifications

- Maximum working pressure: up to 3.68 bar
- Maximum Operating Temperature: 150°C (depending on O-ring material and sight tube material)
- Maximum Centre Distance: (To suit requirements)
- Minimum Centre Distance – Closed Circuit Design: 150mm (For gauges longer than 1000mm, the column is split into sections using intermediate supports).
- Each section maximum length is 1000mm.

### Approvals

- Conforms with EN BS ISO10088 Recreational Craft Directive

### Materials of Construction

Component	Material
Valve Units	Brass
	Stainless Steel
Guard Tube	Aluminium
	Stainless Steel
	Zinc Plated Mild Steel
Sight Tube	Borosilicate Heat Resisting Glass
	Polycarbonate Plastic
Weld Bosses / Flanges	Zinc Plated Mild Steel
	Stainless Steel



### Seal Materials

Seal Material	Temperature Range
Nitrile (NBR)	Up to 120°C
Viton (FKM)	Up to 150°C
EPDM	Up to 150°C
Neoprene	Up to 140°C

Other seal materials available upon request.

### Connection Options

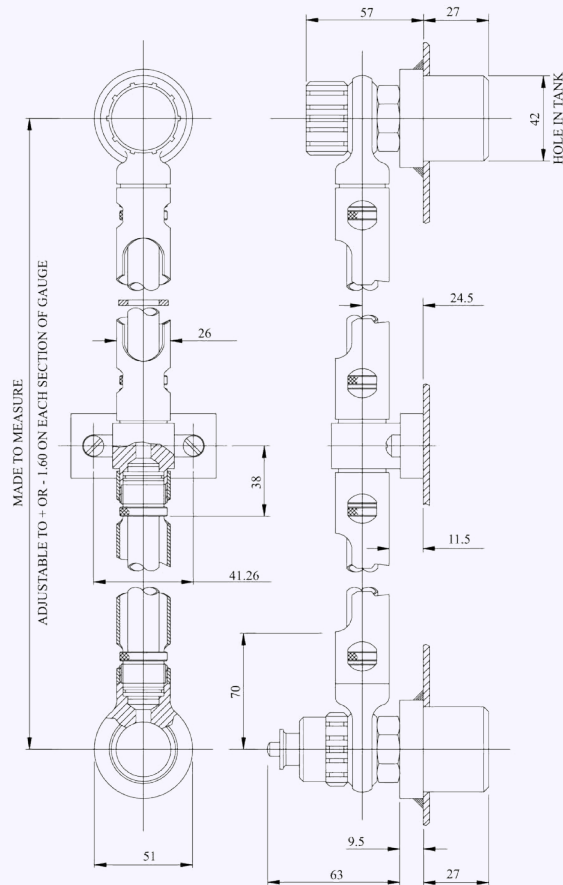
Type	Size
Threaded Connections	1/2" BSP or NPT
	3/4" BSP or NPT
Flanged Connections	DIN Flanges
	ANSI Flanges
Weld Boss	42mm OD

## Design:

Gauge always supplied with a push button self-closing isolation valve at the bottom connection.

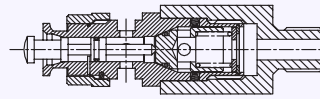
### Closed Circuit Design

(Connection at top and bottom)

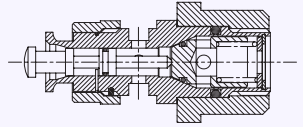


### Other Connection Options

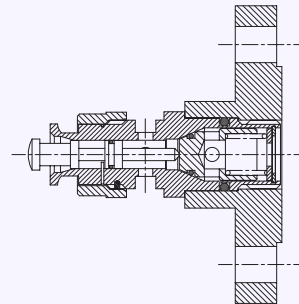
THREADED CONNECTION



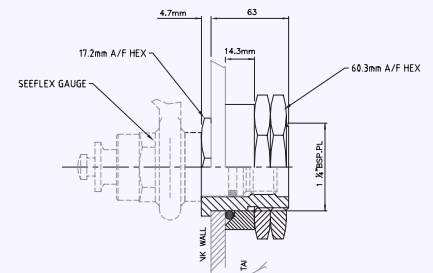
42MM WELD BOSS CONNECTION



FLANGED CONNECTION



NON-WELD BOSS CONNECTION



The tank boss is only suitable for use with tanks of wall thickness from 1.58mm (1/16") to 7.9mm (5/16"). hole diameter of 42.0mm is required in the tank wall.

### Push-button operation

Except when a reading is being taken, the gauge is permanently isolated from the contents of the tank. To take a reading the spring-loaded valve is opened by pressing a push-button; when released, the connection between the tank and gauge is automatically resealed.

### Safe from external damage

Due to the design of the push-button isolation valve, no amount of damage to the gauge or external fittings on the tanks can break the liquid seals. In such an event the fluids cannot escape.

### Graduation

Where a measure of the precise storage volume is required, an engraved scale plate can be provided marked with the capacity units.

### When ordering please state:

- Distance between gauge centres
- Media identification
- Operating temperature and pressure
- Type of valve units
- Tank connections
- Material of construction



## Type G22 Quickmount

The Seetru Quickmount liquid level gauge is a direct reading, tubular design for general industrial use. The unique isolating valve and collar design allows for maintenance of the gauge column without tools and the need to drain the tank. Available with automatic safety shut off valves and drain valve. The construction provides a modern gauge, which is aesthetically pleasing. Suitable for a wide range of pressures and temperatures, the gauge is fitted with elastomer seals in materials to suit the required service.

### Example Applications

- Diesel (on-land applications)
- Fuel oil (on-land applications)
- Lubrication oil (on-land applications)
- Water
- Coolant
- Chemicals

### Specifications

- Maximum working pressure for Glass Sight Tube: up to 22 bar & 15°C @ 400mm centres
  - Maximum working pressure for Polycarbonate Sight Tube: up to 14 Bar & 100°C.
  - Maximum Operating Temperature: 150°C (depending on o'ring material)
  - Maximum Centre Distance: To suit requirements \*\*
  - Minimum Centre Distance – Closed Circuit Design: 150mm
  - Minimum Centre Distance – Open Circuit Design: 100mm
- \*\* For gauges longer than 1000mm, the column is split into sections using intermediate supports. Each sections maximum length is 1000mm.

### Approvals

- Conforms with EN BS ISO10088 Recreational Craft Directive

### Materials of Construction

Component	Material
Valve Units and Flanges	Brass
	Stainless Steel
	Polypropylene Plastic
Guard Tube	Aluminium
	Stainless Steel
	Zinc Plated Mild Steel
Sight Tube	Borosilicate Heat Resisting Glass
	Polycarbonate Plastic



### Connection Options

Type	Size
Threaded Connections	1/2" BSP or NPT
	3/4" BSP or NPT
Flanged Connections	DIN Flanges
	ANSI Flanges
Weld Boss	Various Sizes

Other connections available upon request.

### Seal Materials

Seal Material	Temperature Range
Nitrile (NBR)	Up to 120°C
Viton (FKM)	Up to 200°C
EPDM	Up to 150°C
Neoprene	Up to 140°C

Other seal materials available upon request.



## Design:

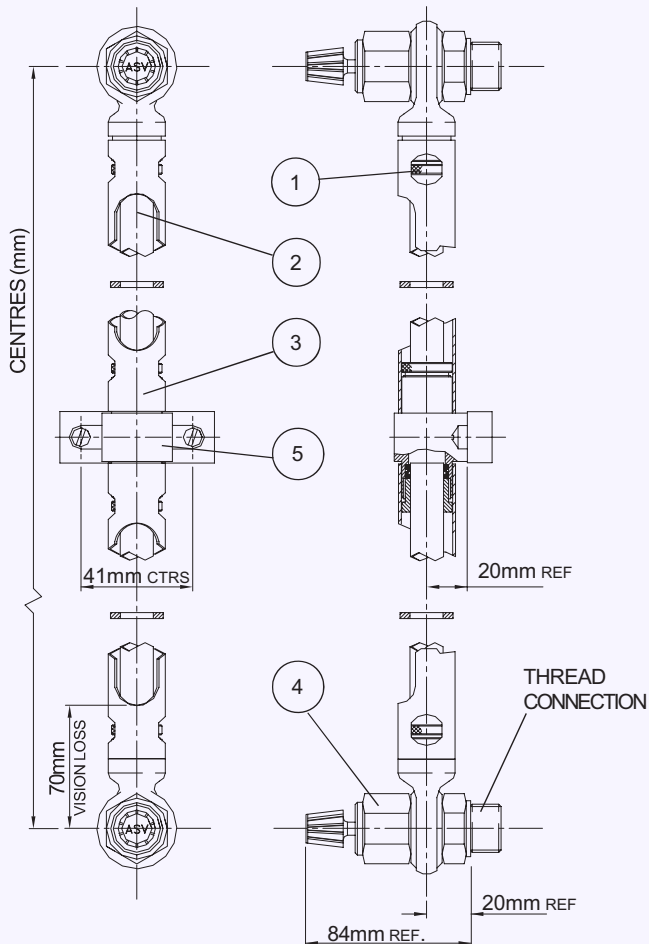


Gauge always supplied with a manual screw-down isolation valve at the bottom connection.

The manual screw-down isolation valve is also available with A.S.V. (auto shut off valves). The A.S.V. feature means that in the unlikely event that the glass is damaged, the contents of the tank will not be lost.

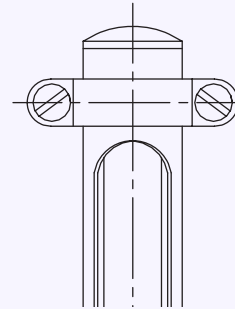
### Closed Circuit Design

(Connection at top and bottom)



### Open Circuit Design

(No top connection)

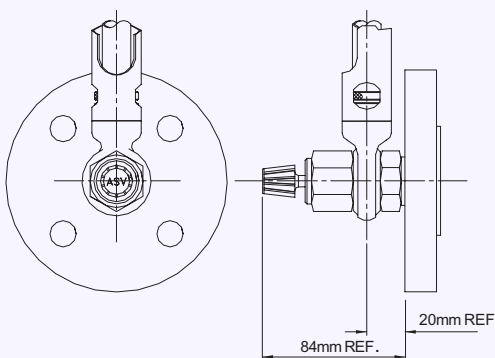


#### OPEN CIRCUIT

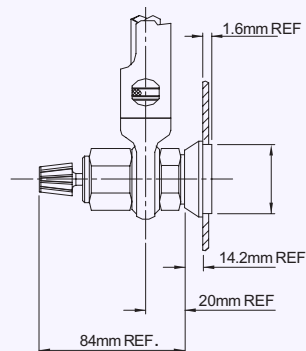
The Quickmount gauge can be supplied with no valve at the top connection.

This is suitable for non-pressurised tanks only.

### Other Connections Options



FLANGED OPTION

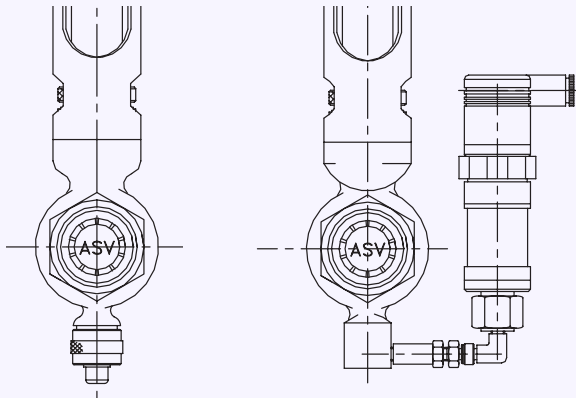


WELDED TANK BOSS OPTION



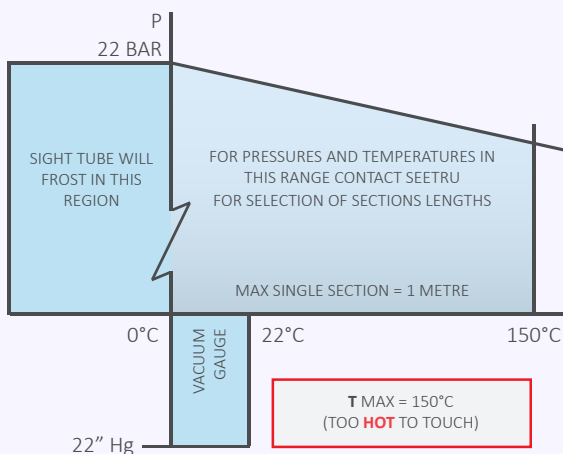
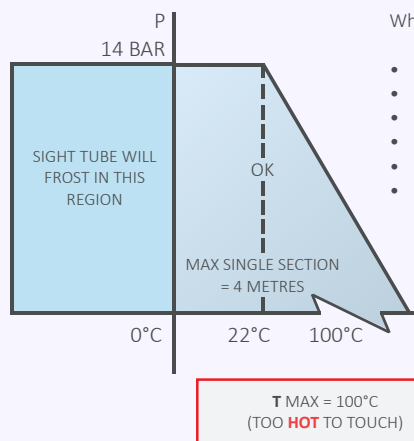


## Additional Options



**DRAIN/VENT VALVES**  
Drain and vent valves are available on request.

**PRESSURE TRANSMITTER/  
ELECTRONIC READOUT**  
The Quickmount gauge is available with a pressure transmitter (normal output of 4-20mA) to enable electronic readout, digital display or computer interface.

**BOROSILICATE GLASS SIGHT TUBE****POLYCARBONATE SIGHT TUBE**

When ordering please state:

- Distance between gauge centres
- Media identification
- Operating temperature and pressure
- Type of valve units
- Tank connections
- Material of construction

The above constraints are approved for water and other non-aggressive liquids only.  
For any liquid or for any constraint in excess of those given above, please consult Seetru.

**Ease Of Installation & Maintenance**

The Quickmount liquid level gauge can be installed without the use of special tools. Threaded end Units are screwed into female tank bosses. The gauge collars slip over these Units and are secured by hand tightening retaining nuts. 'O' ring sealing is used throughout. The isolating valves will allow column removal without the need to drain the tank.

**Tank Calibration**

Where a measure of the precise storage volume is required, an engraved scale plate can be provided, marked with the capacity units.

**Electronic & Digital Readout**

Remote reading system and/or computer interface options provide a dual system with the advantages of both electronic and sight systems. Level alarms can also be implemented.

## Type G31 Seeflex

The Seetru Seeflex Gauge is designed for use within the marine & offshore industries for tanks containing flammable liquids. The Seeflex gauge meets the requirements of SOLAS (Safety of Lives at Sea). This gauge is commonly used on cargo ships and work boats.

### Example Applications

- Diesel
- Fuel oil
- Aviation fuel
- Lubrication oil
- Water
- Coolant

### Specifications

- Maximum Operating Pressure: 2.67 bar
- Maximum Operating Temperature: 80°C
- Minimum Operating Temperature: -35°C
- Minimum Centre Distance – Closed Circuit Design: 358mm
- Minimum Centre Distance – Open Circuit Design: 315mm

### Materials of Construction

Component	Material
Front Bezel	Black Coated, Rust Protected Mild Steel
	Stainless Steel 304
Back Channel	Stainless Steel 304
Valve Bodies / End Units	Brass
	Stainless Steel 316
Reflex Glass	Hardened Borosilicate

### Seal Materials

O-ring material – Top cap	Temperature Range
Nitrile (NBR)	-35°C to +80°C

Other seal materials available upon request.



### Approvals

- Det Norske Veritas (DNVGL),
- Lloyds Register of Shipping (LR)
- American Bureau of Shipping (ABS)
- Bureau Veritas (BV)
- RINA
- Nippon Kaiji Kyokai (Class NK)

\*Meets the requirements of SOLAS (Safety of Lives at Sea)\*

### Connection Options

Type	Size
Weld Bosses	42mm Weld Boss
Threaded Connections	G1/2" BSP male
	G3/4" BSP male
Flanged Connections	DN20 PN16
	DN25 PN16
	3/4" ANSI 150
	1" ANSI 150
Non-Weld Boss	42mm

Other connections available upon request.

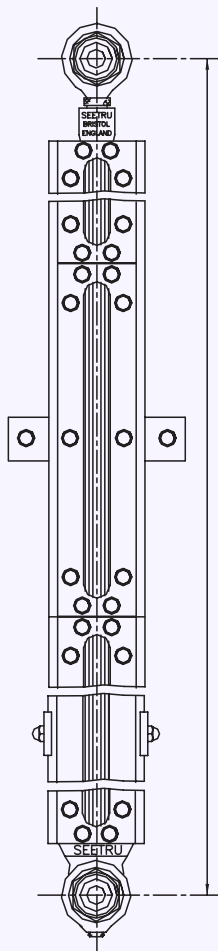


## Design:

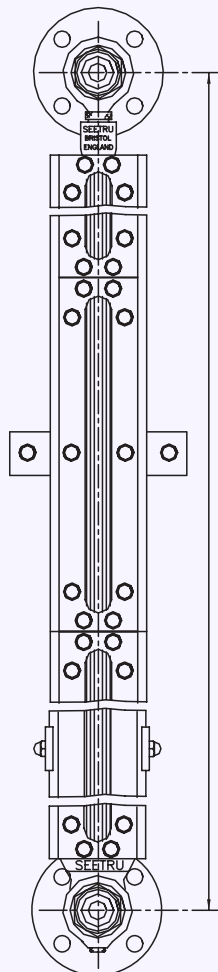


Gauge always supplied with Push-button Isolation Valve at the bottom connection

### With 42mm Weld Bosses

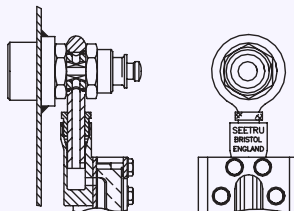


### With Flanged Connections



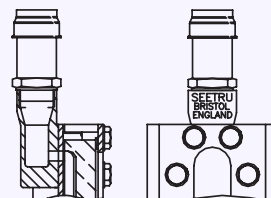
### Closed Circuit Design Top Fittings

Self Closing Pushbutton Isolation Valve

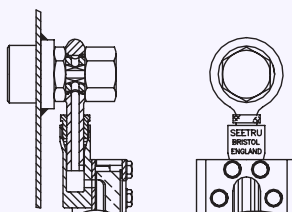


### Open Circuit Design

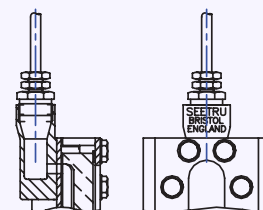
(Top Of Gauge Must Be Min. 100mm Above Tank Top) Automatic Safety Vent Valve



### Valveless Tank Return

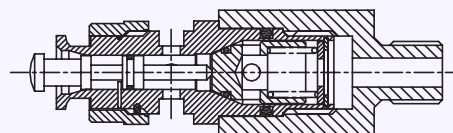


### Pipe Union Connection

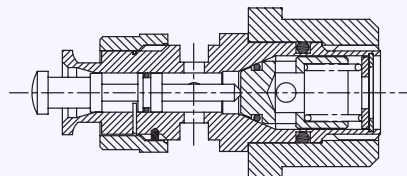


### Connection Options

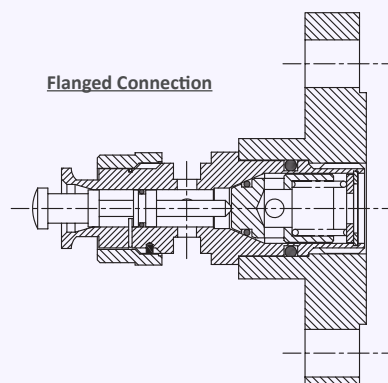
#### Threaded Connection



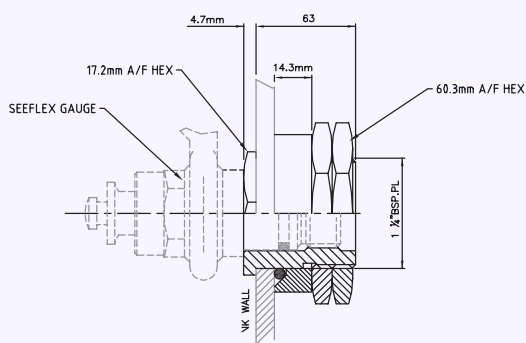
#### 42mm Weld Boss Connection



#### Flanged Connection



#### Non-Weld Boss Connection



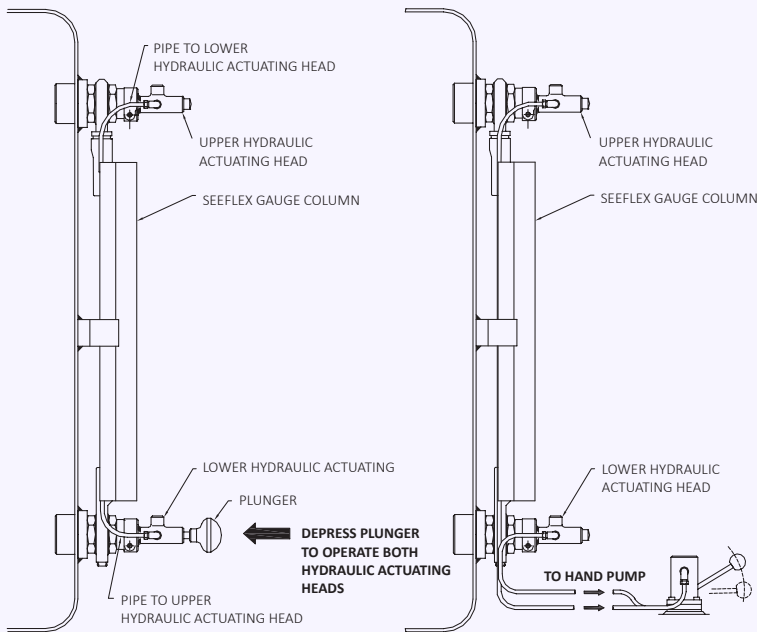
The tank boss is only suitable for use with tanks of wall thickness from 1.58mm (1/16") to 7.9mm (5/16") hole diameter of 42.0mm is required in the tank wall.

## Design:

### HYDRAULIC ACTUATION

The hydraulic actuation allows the operation of more than one valve from the same location, In the case of the integral system, both valves will be mounted on the same gauge- this is used mainly for longer gauges that exceed 1000mm centres. The remote system allows the operation of up to 4 valves on various gauges from the same location.

#### Integrated Hydraulic Actuation



#### Remote Hydraulic Actuation

##### Push-button operation

Except when a reading is being taken, the gauge is permanently isolated from the contents of the tank. To take a reading the spring-loaded valve is opened by pressing a Push-button. When released, the connection between the tank and gauge is automatically resealed.

##### Safe from external damage

Due to the design of the push-button isolation valve, no amount of damage to the gauge or external fittings on the tanks can break the liquid seals. In such an event the fluids cannot escape.

##### Closed circuit design

The closed circuit design penetrates the tank wall at both top and bottom connections. The options for the top connection are either a push-button self-closing valve or valve less tank return.

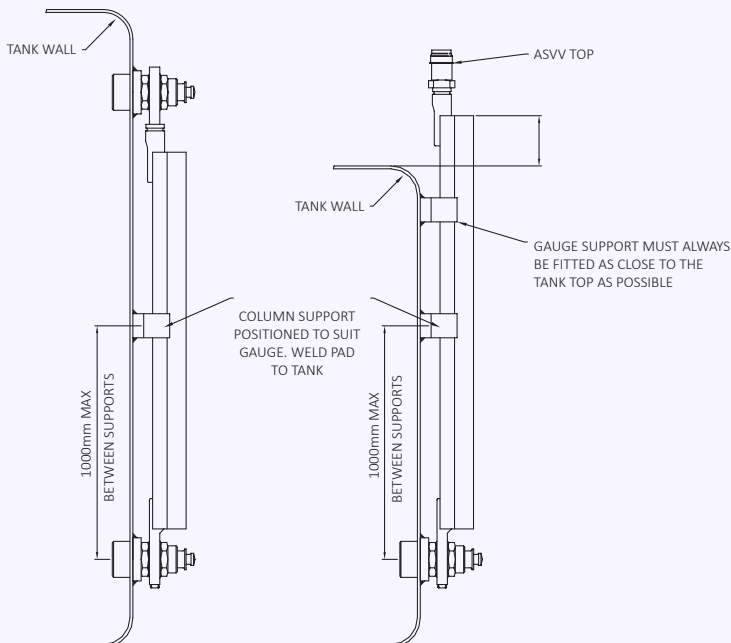
##### Open circuit design

This is only allowable when it is possible for the gauge column to extend above the top of the tank by at least 100 mm. The upper end of the gauge can be supplied with an automatic safety vent valves or, alternatively, a pipe union connection. The automatic safety vent will allow air to pass, but will seal against a liquid level. In the case of the pipe union connection design, a 10 mm o/d steel vent pipe is returned to the tanks or into the tank vent pipe.

##### Graduation

Where a measure of the precise storage volume is required, an engraved scale plate can be provided marked with the capacity units.

#### Column Supports



Gauges that have a centre distance greater than 1000mm and open circuit gauges, will be supplied with a column support, so that the gauge can be fixed to the tank wall. The maximum distance between the gauge fixings and a column support or between two column supports should be 1000mm, in the case of open circuit gauges the top most column support should be fitted as close to the tank top as possible.

Number of isolating valves	Total allowable length of piping
1	60 metres
2	30 metres
3	20 metres
4	15 metres



## Type G32 Quickflex

The Seetru Quickflex gauge is a flat glass level gauge which offer enhanced column protection over and above a tubular glass gauge. Please note – the Quickflex gauge is not type approved for use with flammable liquids for shipbuilding applications, if you require gauge with marine type approvals please see the G31 Seeflex gauge and the G35 Seemag gauge.

### Example Applications

- Diesel/fuel oil (on land only – if for shipbuilding see G31 Seeflex gauge and the G35 Seemag gauge)
- Chemicals
- Water
- Coolant

### Specifications

- Maximum Operating Pressure: 3.25 bar
- Maximum Operating Temperature: 100°C
- Minimum Centre Distance – Closed Circuit Design: 358mm
- Minimum Centre Distance – Open Circuit Design: 315mm

### Approvals

The Quickflex gauge is not type approved for use with flammable liquids for shipbuilding applications, if you require gauge with marine type approvals such as LR, DNV, BV, ABS etc, please see the G31 Seeflex gauge and the G35 Seemag gauge.

### Materials of Construction

Component	Material
Front Bezel	Black Coated, Rust Protected Mild Steel
	Stainless Steel 304
Back Channel	Stainless Steel 304
Valve Bodies / End Units	Brass
	Stainless Steel 316
Reflex Glass	Hardened Borosilicate



### Seal Materials

Seal Material	Temperature Range
Nitrile (NBR)	-35°C to +100°C
Viton (FKM)	-15°C to +100°C

Other seal materials available upon request.

### Connection Options

Type	Size
Threaded Connections	1/2" BSP or NPT
	3/4" BSP or NPT
Flanged Connections	DIN Flanges
	ANSI Flanges
Weld Boss	42mm OD

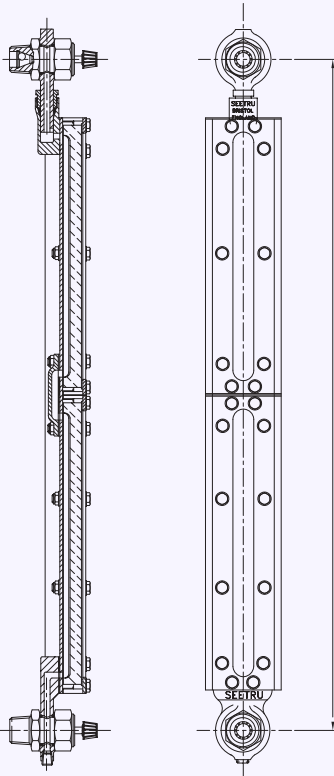
Other connections available upon request.

## Design:

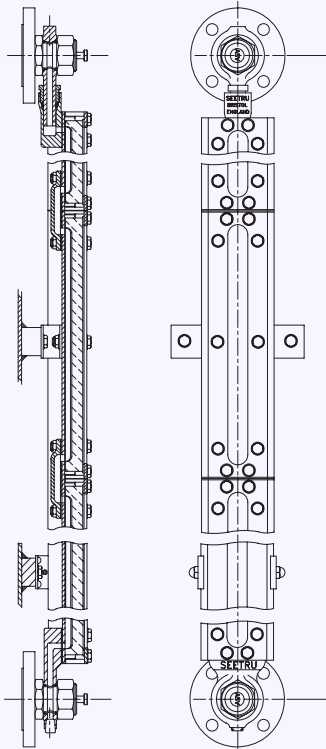


Gauge always supplied with manual screw down isolation valve at the bottom connection, the 3/4" valve is available with auto shut-off valve to seal the tank in case of damage to the gauge column.

### With Threaded Connections

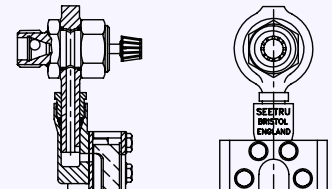


### With Flanged Connections

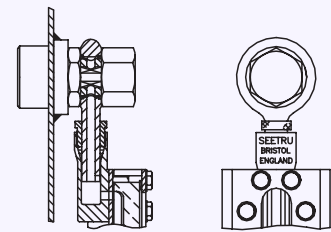


### Closed Circuit Design Top Fittings

**Manual screw down isolation valve**  
(3/4" version available with auto shut-off)



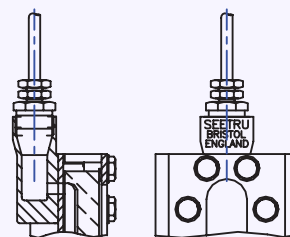
**Valveless tank return**



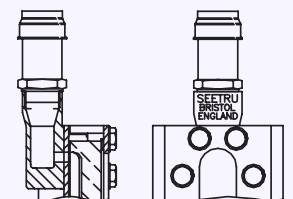
### Open Circuit Design Top Fittings

(TOP OF GAUGE MUST BE MIN. 100mm ABOVE TANK TOP)

#### Pipe Union Connection



#### Automatic Safety Vent Valve



### Closed circuit design.

The closed circuit design penetrates the tank wall at both top and bottom connections. The options for the top connection are either a manual screw down isolation valve or valve less tank return. The 3/4" screw down valve is available with auto shut-off.

### Open circuit design

This is only allowable when it is possible for the gauge column to extend above the top of the tank by at least 100 mm. The upper end of the gauge can be supplied with an automatic safety vent valves or, alternatively, a pipe union connection. The automatic safety vent will allow air to pass, but will seal against a liquid level. In the case of the pipe union connection design, a 10 mm o/d steel vent pipe is returned to the tanks or into the tank vent pipe.

### Graduation

Where a measure of the precise storage volume is required, an engraved scale plate can be provided marked with the capacity units.



## G35 Seemag Magnetic Gauge

The Seetru Seemag® tank content indicator or gauge is a high quality yet economical magnetic level indicator. Its unique design offers considerable advantages over conventional magnetic gauges including accurate step-less reading with all round visibility and the option of high/low level alarms with remote digital reading.

The gauge utilises a marker strip on a movable carriage fitted on the outside of a stainless steel tube, which by way of magnets moves up and down in unison with a float inside the tube. The marker strip is adjustable to suit the specific gravity of the liquid to be measured.

### Example Applications

- Diesel
- Fuel oil
- Heavy fuel oil (heating may be required)
- Lubrication oil
- Water
- Coolant
- Chemicals

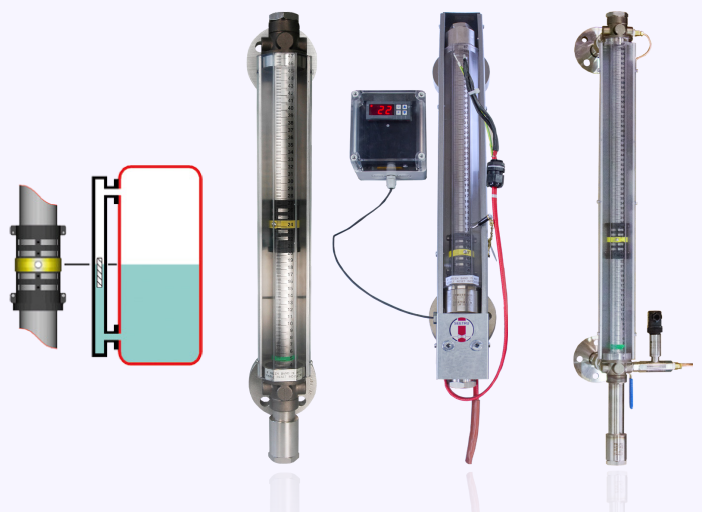
### Specifications

- Maximum Operating Temperature: 180°C
- Minimum Centre Distance: 450mm, Maximum Centre Distance: 5000mm
- Specific gravity: 0.7 – 1.3 (using different floats)
- Maximum kinematic viscosity: 40mm<sup>2</sup>/s (Indicator is suitable for more viscous fluids if supplied with trace heating)
- Maximum Working Pressure:
  - 22 bar for industrial applications
  - 18 bar for marine applications

### Materials of Construction

Component	Material
By-Pass Tube	Stainless Steel 316
Front Guard	Polycarbonate
Rear Guard	Aluminium Alloy
Collars & Connections	Stainless Steel 316
Float	Stainless Steel 316
Level Indicator & Follower	Polypropylene & Nylon

- Isolation ball valves are available upon request.
- Drain & vent valves available upon request.
- Graduation – A clear scale is included on the front guard, marked in mm and cm.



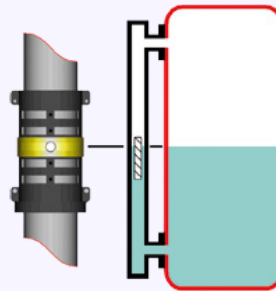
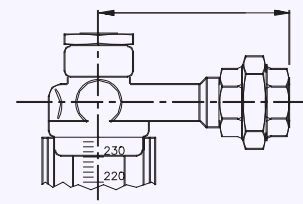
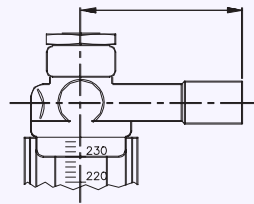
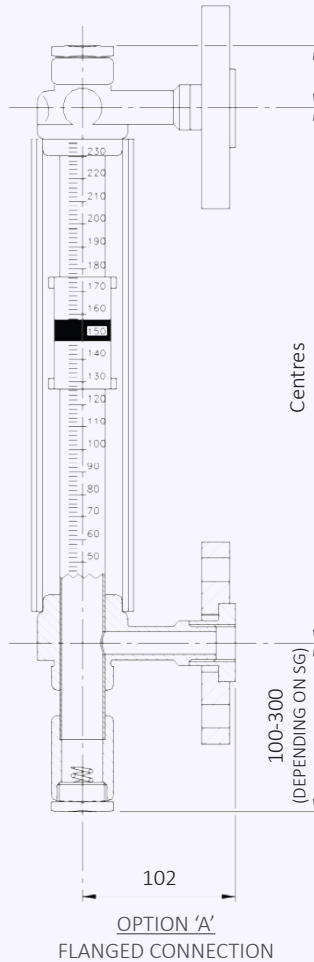
### Approvals

- Det Norske Veritas (DNVGL),
- Lloyds Register of Shipping (LR)
- American Bureau of Shipping (ABS)
- RINA

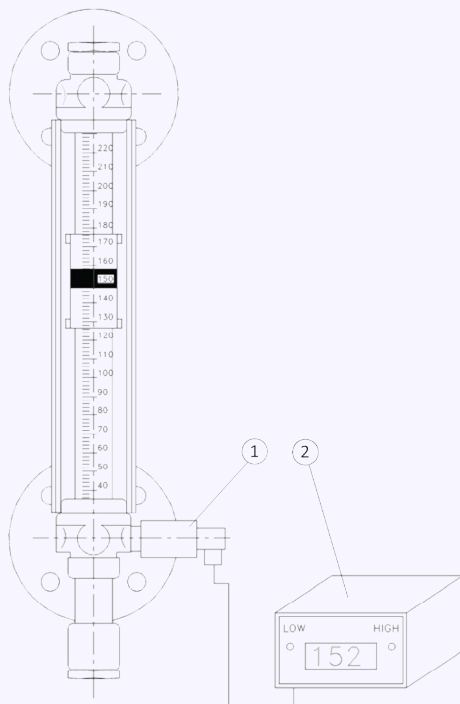
\*Meets the requirements of SOLAS (Safety of Lives at Sea)\*

### Connection Options

Type	Size
Flanged Connections	DN15, DN20, DN25, DN32, DN40 or DN50 PN16 or PN40 DIN Flanges
	1/2", 3/4", 1", 1 1/2" or 2" #150 or #300 ANSI Flanges
Threaded Connections	1/2", 3/4", 1" BSP Thread
	1/2", 3/4" or 1" NPT Thread
Non-Weld Boss	30mm OD Stub Pipe (other sizes may be available upon request)



## Options: Pressure Transmitter and Digital Readout



### Pressure Transmitter

[Marine & intrinsically safe versions available]

Standard pressure transmitter should only be used on atmospheric tanks.  
Differential pressure transmitter to be used on pressurised tanks.

The pressure transmitter works independently from the Seemag and can be used for continuous reading and switching points.

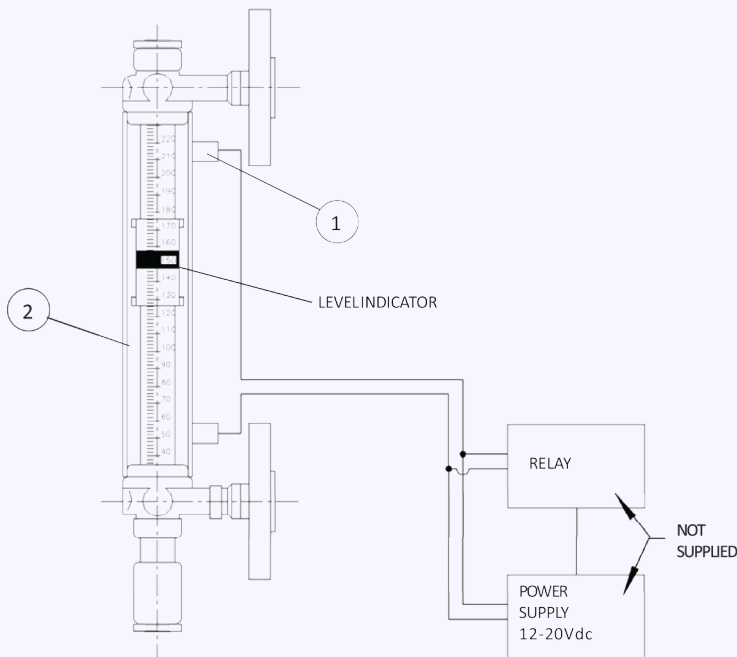
Output signal: 4-20mA  
Supply voltage: 12-28 Vdc  
Operating temperature range:  
Ambient: -25 +85°C  
Fluid: -25 +100°C

### Digital Readout (Optional)

Digital linearised panel meter which requires a DC current.  
This unit usually operates with an analogue pressure transducer.  
High & low switching points incorporated within panel meter.

Transmitter input: 4-20mA  
Power supply: 240Vac 50Hz  
Internal supply: 24V to power transmitter  
Environmental: Operating temp. 0-50°C





#### SWITCHING OPERATION

Level switches are of a magnetic hall effect design. Switches are operated when the magnet in the base of the level indicator passes the switch, in either direction, causing it to be in one or the other state.

A power supply and relay are required to operate the switches (not supplied). Relays can then be terminated to pumps, alarms, switches or to a PC interface.

Switches are attached to rear guard tube and can be moved up or down to suit the required switching point. Two switches are shown, but any number can be supplied.

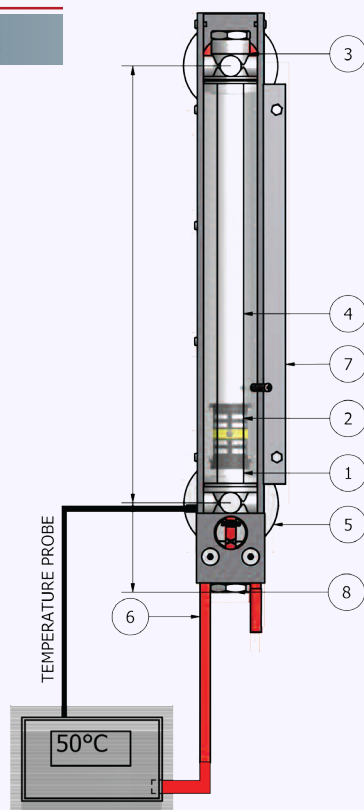
#### TECHNICAL SPECIFICATION

Switches require a 12-20 VDC supply and suitable relay. For suggested supply and relay combinations, contact Seetru. Max. load current: 250mA  
Operating conditions: 0-60°C

### Trace Heating: *(There are three (3) trace heating options available).*



#### 1) Electric Heating:



#### ELECTRIC TRACE HEATING

A continuous loop of 60 W/metre trace heating cable is attached to the rear guard tube of the indicator.

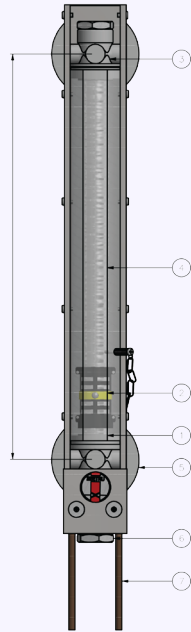
The cable is terminated at one end to a control box which can be used to regulate the temperature in the indicator via a temperature probe.

#### CONTROL BOX

Voltage supply 220-240V  
With temperature display and probe.



### 2) Steam Heating:



#### STEAM HEATING

8mm O/D Copper tube is attached to the rear guard tube in a continuous loop, from the bottom of the indicator.

The enclosure is then fitted around the indicator to protect the copper tube.

STEAM CAN BE FED THROUGH THE PIPE TO HEAT THE LIQUID IN THE BY-PASS TUBE.

#### EXAMPLE

Ambient air temperature = 20°C

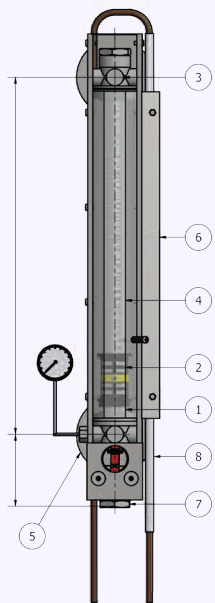
Steam pressure 1.5 bar = 68°C Liquid temperature

Steam pressure 3 bar = 85°C Liquid temperature

#### NOTE

MAXIMUM WORKING TEMPERATURE SHOULD NOT EXCEED 180°C

### 3) Thermal Oil Heating:



#### THERMAL OIL HEATING

The Thermal heating system comprises of: 8mm O/D copper tube fed around the rear of the gauge, when thermal heating oil is fed through the tube this heats the fluid inside the indicator.

This is all encased in a protective steel enclosure. Fitted with a temperature gauge so the fluid temperature can be monitored.

## Bottom connection dimensions:



MATRIX 5TH DIGIT	S.G	BOTTOM CAP (A)	BOTTOM DRAIN & CAP (B)
1	0.7 - 0.8	301mm	389mm
2	0.8 - 0.9	202mm	290mm
3	0.9 - 1.1	136mm	224mm
4	1.1 - 1.3	103mm	191mm



# Think Hydrogen ...Think Safety Valves

## Your Reliable Partner in Your Hydrogen Future

Seetru supplies safety relief valves suitable for a wide range of hydrogen applications, including hydrogen generation, fuel cells, compressors and pumps, fuelling systems, storage, pressure vessels, piping systems, and transportation.

These valves can withstand set pressures up to 1100 bar, making them ideal for use in even the most demanding hydrogen applications. Seetru's valves are designed to open quickly and reliably when the system pressure exceeds the set pressure, allowing excess gas to escape safely. This helps to prevent damage to the system and protect personnel from injury.



**Generation**



**Chemical & Process Industries**



**Compression**



**Storage & Transmission**

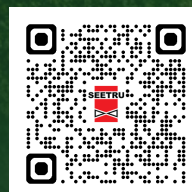


**Power Generation Systems**



[www.seetru.com/hydrogen](http://www.seetru.com/hydrogen)

[www.seetru.com](http://www.seetru.com) | [info@seetru.com](mailto:info@seetru.com) | +44 (0) 117 930 6100





# Seetru Safety Relief Valves



## Setting the Standard

Seetru safety valves set the standard for reliability and safety across a wide range of industrial applications



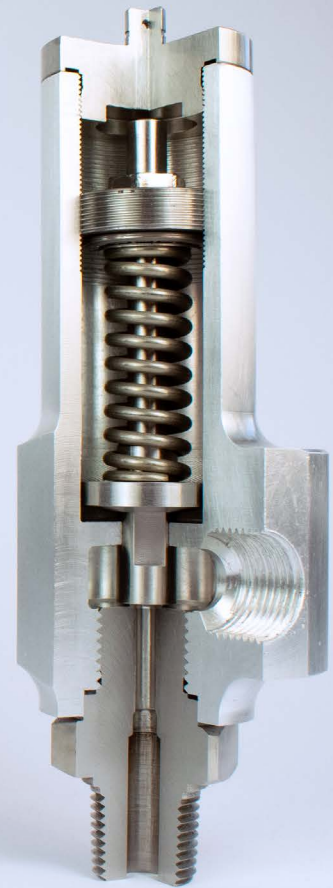
## Engineered for Every Need

Safety valves available with a range of bore sizes, material options, and connection types.



## Performance Approved

The Seetru range of safety valves are approved for a wide range of temperatures & pressures



## Powerful Protection ...In the Palm of Your Hand



## Easier Installation

Seetru safety valves fit seamlessly into tight spaces, simplifying system integration



## Enhanced Flexibility

Allows for greater layout freedom during system design



# Explore Seetru's Product Range

## Quality & Innovation



### Safety Relief Valves

Seetru safety relief valves are known for their reliability, performance, and safety. These valves are manufactured in bronze, brass, or stainless steel and offer a wide range of connections, for applications up to 250 °C

### Change-Over Valves

Change-over valves are critical components in various industrial applications, enabling seamless switching between fluid sources or flow paths. Typically used where plant shut-down is impossible or undesirable for process, engineering, or commercial reasons.

### Liquid Level Gauges

Accurate liquid level monitoring is crucial, whether you're navigating the high seas or managing critical industrial processes. Seetru offers a comprehensive range of liquid-level gauges and indicators designed for precise, reliable measurement in diverse applications.

### Pressure & Temperature Valves

The Seetru P3W Pressure & Temperature relief valve provides protection against both excess temperature as well as over pressurisation. Each of the lift mechanisms will work independently of each other. The valve is designed to be used in hot water boiler applications.

### Auxiliary Valves

From preventing backflow with check valves to guaranteeing precise pressure with minimum pressure valves, each compact valve plays a vital role. Air start valves deliver rapid pressure bursts while isolating valves segment flow for maintenance.

### Circular Window Sight Glasses

Seetru circular window sight glasses are compact low-cost assemblies that provide reliable level indication and positive indication when liquid is present. These screw-in plugs are fitted with high-quality glass.

### Pressure Reducing Valves

Alongside our own manufactured items, Seetru also offers a range of pressure-regulating valves, pressure-reducing valves, and overflow valves. They are mainly used in industrial plants, plant engineering, and process engineering. Pressure-reducing valves can be supplied with flanges, weld ends, or threaded connections.

### Testing Equipment

The Seetru Quicktester™ is compact, lightweight, and portable design is very robust and able to meet the demands of a busy maintenance workshop or mobile operation. The Quicktester™ can be used with plant-generated air supplies or with mobile bottled gas.

[www.seetru.com/seetru-products](http://www.seetru.com/seetru-products)

[www.seetru.com](http://www.seetru.com) | [info@seetru.com](mailto:info@seetru.com) | +44 (0) 117 930 6100







# Seetru Distributor Network

## **Find Your Local Supplier for Seetru Products**

### **Global Reach, Local Support**

Seetru is a global company with an extensive distributor network. This means that wherever you are on the planet, you can access our industry-leading products and receive exceptional service.

[www.seetru.com/our-distributors](http://www.seetru.com/our-distributors)

